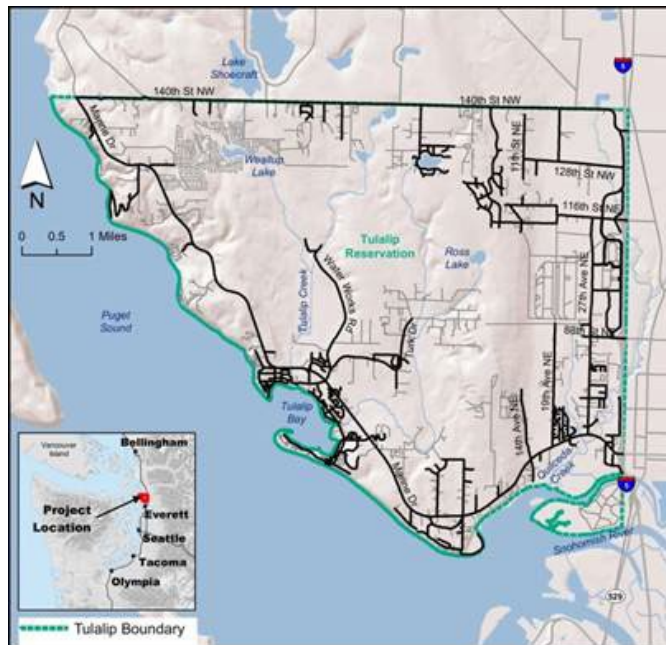




# TULALIP TRIBES BRIDGE INSPECTIONS

November 22, 2022



TULALIP TRIBES TRANSPORTATION DEPARTMENT  
6406 Marine Drive, Tulalip, WA 98271



Tulalip Tribes Transportation Dept RFP Bridge Inspections

# The Tulalip Tribes

## REQUEST FOR PROPOSAL

### TULALIP TRIBES BRIDGE INSPECTIONS

#### 1. INTRODUCTION

The Tulalip Tribes of Washington ("Tribes") are soliciting proposals from qualified firms to conduct and complete three (3) bridge inspections including the Quil Ceda Boulevard Bridge, the Quil Ceda Parkway Bridge, and the Railroad Bridge over I-5 (Bridge No. 5/655). The work also includes a load rating for the Quil Ceda Boulevard Bridge.

It is assumed that the Quil Ceda Boulevard Bridge has not previously been inspected and a load rating has not been completed. The Quil Ceda Parkway bridge was previously inspected, and load rating was prepared in 2014. It is assumed that traffic control will not be required for the Quil Ceda Boulevard and Quil Ceda Parkway bridges.

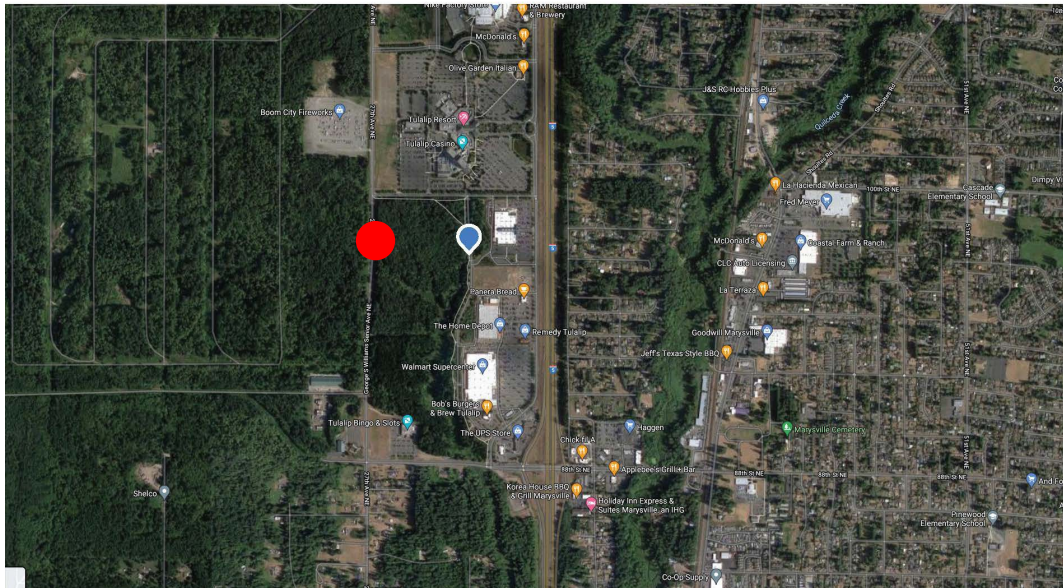
Inspection for the Railroad Bridge over I-5 will require temporary traffic control plans, temporary traffic control and coordination with WSDOT. Inspection will likely be conducted at night during low volume traffic hours. The selected firm shall provide these services.

Each bridge shall be billed separately.

The National Bridge Inspection Standards (NBIS) mandate that all bridges on public roads be inspected at a minimum of two-year intervals. It is noted that there is no specific inspection requirement for tribally owned bridges. However, for tribally owned bridges to participate in the Indian Reservation Road Bridge Program (IRRBP) and be eligible for Federal funding, a tribally owned bridge must be inspected and placed in the National Bridge Inventory (NBI).

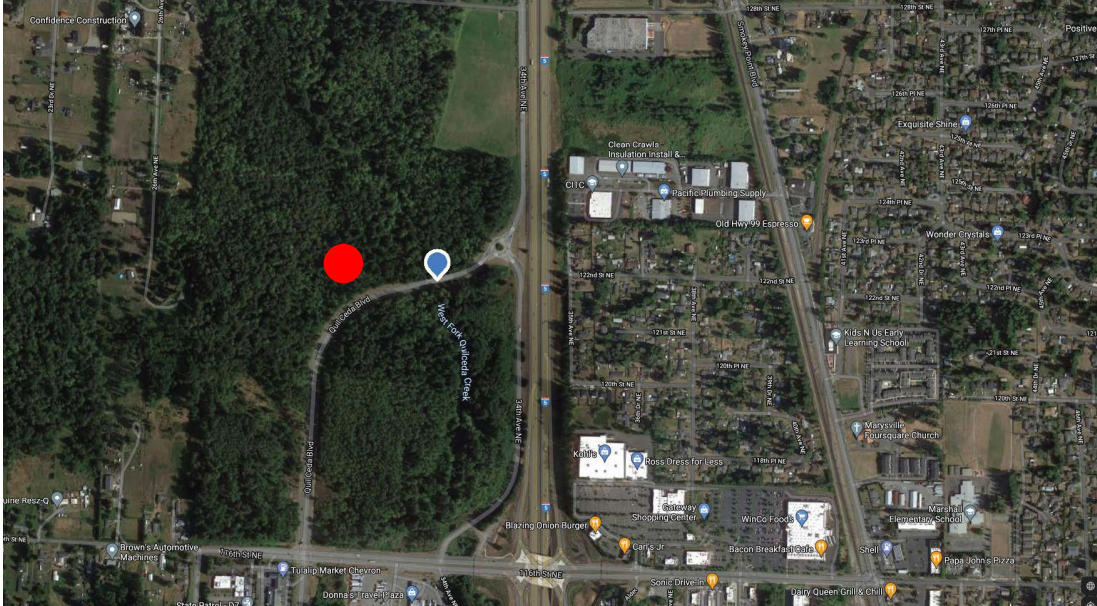


#### Quil Ceda Parkway Bridge

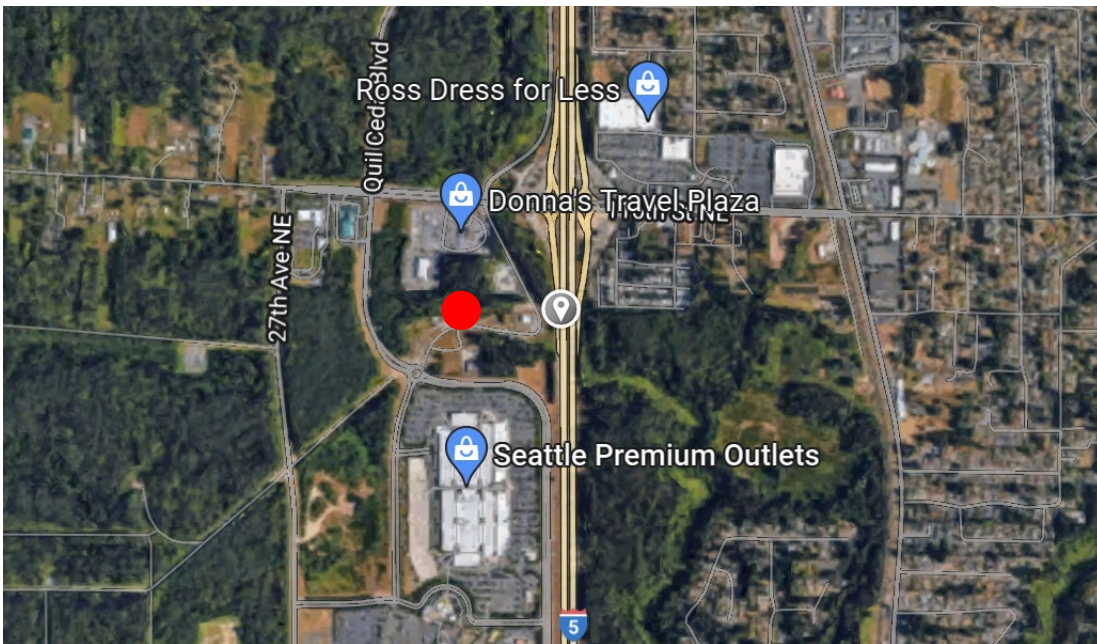




## Quil Ceda Boulevard Bridge



## Tulip Railroad Bridge (5/655)



## 2. SUBMITTAL REQUIREMENTS

Please provide one electronic copy of your firm's Proposal for the Tulalip Tribes review and consideration. The proposal should be no more than twelve (12) single-sided or six (6) double-sided pages in length (excluding cover pages, cover letter, résumés, and dividers).

The following categories shall be included and will be used to evaluate the competitiveness of bids received.

1. Qualifications/expertise of organization - 10 points
2. Qualifications of proposed staff - 20 points
3. Experience in providing similar services - 15 points
4. Experience working with tribes – 20 points
5. Proposed project approach - 15 points
6. Proposed cost per work item and by each bridge - 20 points

Provision of a detailed cost proposal including subconsultants and expenses based upon the Scope of Work items and certified by signature as being valid for at least 180 days is required. A company fee schedule detailing all personnel billing rates is also required. Please also provide a schedule/timeline proposal for completing the described tasks by April 30, 2023.

Proposals must be received electronically via email to the project manager, Christina Parker, Tulalip Tribes, Transportation Department Manager, at [christinaparker@tulaliptribes-nsn.gov](mailto:christinaparker@tulaliptribes-nsn.gov) and Nicole Smith at [nicolesmith@tulaliptribes-nsn.gov](mailto:nicolesmith@tulaliptribes-nsn.gov) no later than 2:00 PM, Pacific Standard Time, December 12, 2022. No hard copy proposals will be accepted. Faxed submittals will not be accepted. If the file size is larger than 15 MB, contact the project manager for alternative submission options. It is the responsibility of the proposer to ensure that electronic submissions are received by the established deadline. For questions about the electronic submittal process contact Christina Parker, Tulalip Tribes, Transportation Department Manager or Nicole Smith, SR Project Manager for Tulalip Tribes Transportation.

**Christina Parker, Tulalip Tribes, Transportation Department Manager**

6406 Marine Drive, WA 98271

[christinaparker@tulaliptribes-nsn.gov](mailto:christinaparker@tulaliptribes-nsn.gov)

(360) 716-5026

**Nicole Smith, Tulalip Tribes SR Project Manager**

6406 Marine Drive, Tulalip WA 98271

[nicolesmith@tulaliptribes-nsn.gov](mailto:nicolesmith@tulaliptribes-nsn.gov)

(360) 716-4697

## 3. INTERVIEW

After reviewing the submissions, the selection committee may elect to conduct interviews with a short-list of proposers.

## 4. FINAL SELECTION

The Tulalip Tribes of Washington intend to select the team that meets the criteria set above from the statement of qualifications and the interview (if needed). Final selection must be approved by and shall be at the sole discretion of the Tulalip Tribes' Board of Directors. The Tulalip Tribes reserve the right select any responsive and responsible proposer they determine.



Tulalip Tribes Transportation Dept RFP Bridge Inspections

## 5. SCOPE OF SERVICES OUTLINE

### QUIL CEDA BOULEVARD BRIDGE

#### PHASE 1 – BRIDGE INSPECTION

##### TASK 1 – Bridge Field Inspection

- Complete a field inspection of the Quil Ceda Boulevard Bridge by a certified bridge inspector.

##### TASK 2 – Prepare Bridge Inspection Report

- Prepare a bridge inspection report in accordance with the National Bridge Inspections Standards

#### PHASE 2 – LOAD RATING ANALYSIS

##### TASK 2 – Bridge Load Ratings

The Consultant will be required to load rate each bridge in accordance with Chapter 13 of the latest WSDOT Bridge Design Manual and the AASHTO Manual for Bridge Evaluation, including interims. The load ratings are to be completed using the LRFR method.

### QUIL CEDA PARKWAY BRIDGE

#### PHASE 1 – BRIDGE INSPECTION

##### TASK 1 – Bridge Field Inspection

- Complete a field inspection of the Quil Ceda Parkway Bridge by a certified bridge inspector.

##### TASK 2 – Prepare Bridge Inspection Report

- Prepare a bridge inspection report in accordance with the National Bridge Inspections Standards

### RAILROAD BRIDGE OVER I-5 (5/655)

#### PHASE 1 – BRIDGE INSPECTION

##### TASK 1 – Maintenance of Traffic and Inspection Planning

- Develop an inspection and safety plan for inspection of the bridge
- Develop Traffic Control Plans for Tulalip Tribes and WSDOT review and approval

##### TASK 2 – Bridge Field Inspection

- Provide temporary traffic control for the bridge inspection
- Complete a field inspection of the Railroad Bridge by a certified bridge inspector.

##### TASK 3 – Prepare Bridge Inspection Report

- Prepare a bridge inspection report in accordance with the National Bridge Inspections Standards
  - Update bridge inspection information into the WSDOT Bridgeworks database
- 

