

PARENT REVIEWS

"It was wonderful to see our family come together, sharing the joy of the season. Having other families who understand the challenges of outings like this were a blessing"

"I want to thank the Family Haven IDD Program for all that they do for us as a community and most of all for being so supportive and taking the time to plan and make these events happen"

"Tulalip has wrapped us in so much love that it feels like we were always meant to be there"

"The gifts that the IDD Program have provided our family can never be measured and stretch way beyond this group. Thank you for your openness and inviting spirits"

"We are very grateful for the support, I would probably be going in circles, We will finally have a diagnosis/answers for my children"

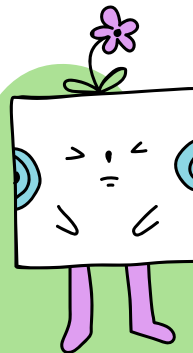


IDD acronym stands for:
**Intellectual Developmental
Disabilities or Delays**

Mission Statement:

To provide education and advocacy to support all members with special needs to feel seen, heard and supported as an individual and a valued member of the community.

OUR SERVICES



- ★ Assistance with: Application processes for any Medical Programs, Disability, Care-Giving, etc.
- ★ Connecting families to Tribal, Local, and Federal resources (Day Care, Evaluations, Therapy, etc.)
- ★ Community outreach: Networking with Local Programs to spread awareness and knowledge about how the community may help families of a child who lives with IDD
- ★ Weekly Support Group
- ★ Monthly Play Group
- ★ Partnerships with Programs in Snohomish County

FAMILY HAVEN

Disabilities Support Program



Mikaylee Pablo:

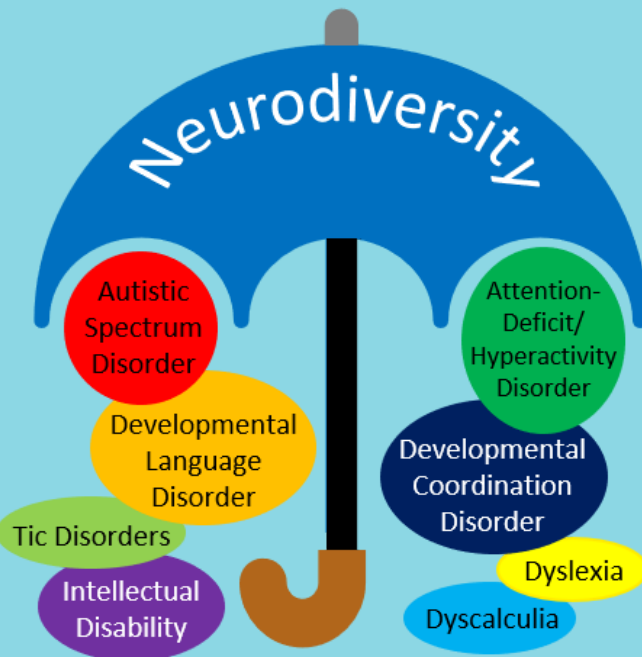
Cell (564)516-1972
Desk: (360)716-4329
mikayleepablo@tulaliptribes-
nsn.gov

Nicole Couevas:

Cell: (360)454-4530
Desk: (360)716-4935
ncouevas@tulaliptribes-
nsn.gov

About Play & Support Groups

Play Group is a safe, fun and learning group that meets in different settings allowing families to gain confidence in public outings together with the support of other families and the IDD Case Managers.



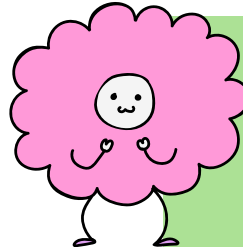
Support group is a place where families share and learn from one-another's experiences, strategies, successes and struggles, share a meal, and most importantly, provide a safe place for children to play.

WHO CAN JOIN:

The IDD Program is open to Enrolled Tulalip Tribal members and any Other Enrolled Native's in the Snohomish County with suspected delays due to Intellectual and/or Developmental Disabilities (IDD) The preference list is as follows :

- 1) Enrolled Tulalip Tribal Children birth-18 (on and off the reservation),
- 2) Children born to Enrolled Tulalip Tribal Members who are not enrolled
- 3) Other Native enrolled members that live in Snohomish County

(Proof of Tribal Enrollment is required if requesting preference)



OPTION NO. 1 (OUTSIDE REFERRAL)

Families may be referred by any department within the Tulalip Tribes or the Marysville School District staff.



OPTION NO. 2 (SELF-REFERRAL)

Families may request services by calling and setting an appointment or submitting an application online at <https://www.tulaliptribes-nsn.gov/Dept/FamilyHaven>

START HERE

for process of services



STEP NO. 1

Once a referral is received a case manager will contact the family within 72 business hours to schedule a consultation appointment

STEP NO. 2

Appointment to establish care and create family plan

STEP NO. 3

Case managers will maintain communication with families and follow-up on progress through life transitions