

## ADDENDUM NO. 1

September 09, 2025

**Engineer:**

Parametrix  
1019 39th Avenue SE, Suite 100  
Puyallup, Washington 98374

**Owner:**

The Tulalip Tribes of Washington  
6406 Marine Drive  
Tulalip, Washington 98271

### TULALIP BAY WATER SYSTEM IMPROVEMENTS PROJECT

To: All Holders of the Bidding Documents, Contract Specifications, and Construction Drawings

This Addendum forms a part of the Contract Documents and modifies the Bidding Documents, Contract Specifications, and Construction Drawings for the opening date of September 17, 2025.

Acknowledge receipt of this addendum on the Bid Proposal Form. Failure to do so may subject the Bidder to disqualification. This addendum consists of:

- 4 Pages of text (including this cover sheet)
- 2 Supplemental Drawings



Prepared by: \_\_\_\_\_  
M. Younis Mahmoodi, PE

Checked by: John L. Wright III  
John L. Wright III, PE

Approved by: Happy D. Longfellow  
Happy D. Longfellow, PE

**ADDENDUM NO. 1**  
**TULALIP BAY WATER SYSTEM IMPROVEMENTS PROJECT**  
**REVISIONS TO CONTRACT DOCUMENTS**

**CONSTRUCTION DRAWINGS**

**1. Sheet W22 and W24**

- a. Replace Plan Sheets W22 and W24 with the attached sheets labeled Addendum No. 1.

The following is a summary of changes:

- On Sheet W22:
  - Callout at STA 50+30.81, 8.14' RT updated to "MISSION BEACH RD, STA 50+30.81, 8.14' RT, 6"-45° BND (MJ)"
  - Callout at STA 50+35.54, 8.07' RT updated to "STA 50+35.54, 8.07' RT=, MISSION BEACH LN, STA 30+08.21, 5.34'RT, 6"x6" TEE (FL), (3) 6" GV (FLxMJ)"
- On Sheet W24:
  - Callout at STA 30+08.21, 5.34' RT updated to "MISSION BEACH RD, STA 50+35.54, 8.07' RT=, MISSION BEACH LN, STA 30+08.21, 5.34'RT, 6"x6" TEE (FL), (3) 6" GV (FLxMJ)"

**BIDDER'S QUESTIONS AND ANSWERS**

**Question:** Regarding restraining the water pipe, should the entire watermain—including joints and fittings—be restrained, or should restraint be applied only as specified in the DIPRA table shown on page DT3?

**Answer:**

See Construction Note 1:

1. WHEN A WATER MAIN IS TO BE INSTALLED WITH LESS THAN 10 FEET OF HORIZONTAL SEPARATION FROM A SEWER MAIN, AND A MINIMUM OF 18 INCHES OF VERTICAL SEPARATION IS MAINTAINED BETWEEN THE BOTTOM OF THE WATER MAIN AND THE CROWN OF THE SEWER, **THE WATER MAIN AND ALL FITTINGS SHALL BE MECHANICALLY RESTRAINED USING ROMAC ROMAGRIP OR APPROVED EQUAL** AS SHOWN ON SHEET DT3. ALL OTHER PIPE JOINTS NOT RECEIVING MECHANICAL RESTRAINT SHALL BE **RESTRAINED WITH RESTRAINT GASKET AS SPECIFIED BY MANUFACTURER OR STAR PIPE EXTERIOR RESTRAINT HARNESS**. IF THE REQUIRED 18-INCH VERTICAL SEPARATION CANNOT BE MAINTAINED AT A WATER MAIN CROSSING OVER A SEWER, THE WATER MAIN SHALL BE INSTALLED IN A STEEL CASING. A DESIGN REVISION REQUEST SHALL BE SUBMITTED TO THE ENGINEER A MINIMUM OF ONE WEEK PRIOR TO INSTALLATION OF THE AFFECTED PIPE SEGMENT.

**Question:** Based on the SP and geotechnical report, onsite material is not likely suitable for backfill and the export and import are incidental to the pipe (per SP-128) will there be additional compensation for addition depths greater than the I.E.'s shown on the plan and profile sheets if existing utility's become a conflict and additional excavation is required?

**Answer:**

The Contractor shall refer to the geotechnical report (Appendix A) to determine the extent of suitable material. Any additional excavation beyond the invert elevations shown on the Plans (with a minimum cover depth of 3.5 feet) that is determined to be unsuitable will be compensated under Force Account.

**Question:** Trench section on DT1 says native material meeting 9-03.19 is acceptable for reuse. Is it assumed that it meets that specifications?

**Answer:**

Per the trench detail on DT1, native material may be reused for trench backfill only if it meets the requirements of Section 9-03.19. Refer to the geotechnical report (Appendix B) for the available soils information. Any assumptions beyond what is contained in the report shall be made by the Contractor.

**Question:** Bid evaluation talks about preferred and key employees and how it is scored but the bid criteria doesn't reflect points for this, can you please provide clarification?

**Answer:**

Points will be assigned based on Section 3.4.5 (Evaluation Criteria) and in accordance with the Tulalip TERO Code 9.05.340, which outlines the "Weight of Award" competitive bid process.

**Question:** There is an AIA contract and regular Tulalip contract, which one is being used?

**Answer:**

The AIA document referenced is the payment bond example, not the contract. The Tulalip contract will be used as the official agreement for this project.

**Question:** Is pollution insurance required? If so how long will contractor need to maintain it?

**Answer:**

Pollution insurance is not anticipated to be required for this project.

**Question:** SP-20 says we have to pay for all water and power, yet SP-133 says the owner will cover this. Please provide clarification.

**Answer:**

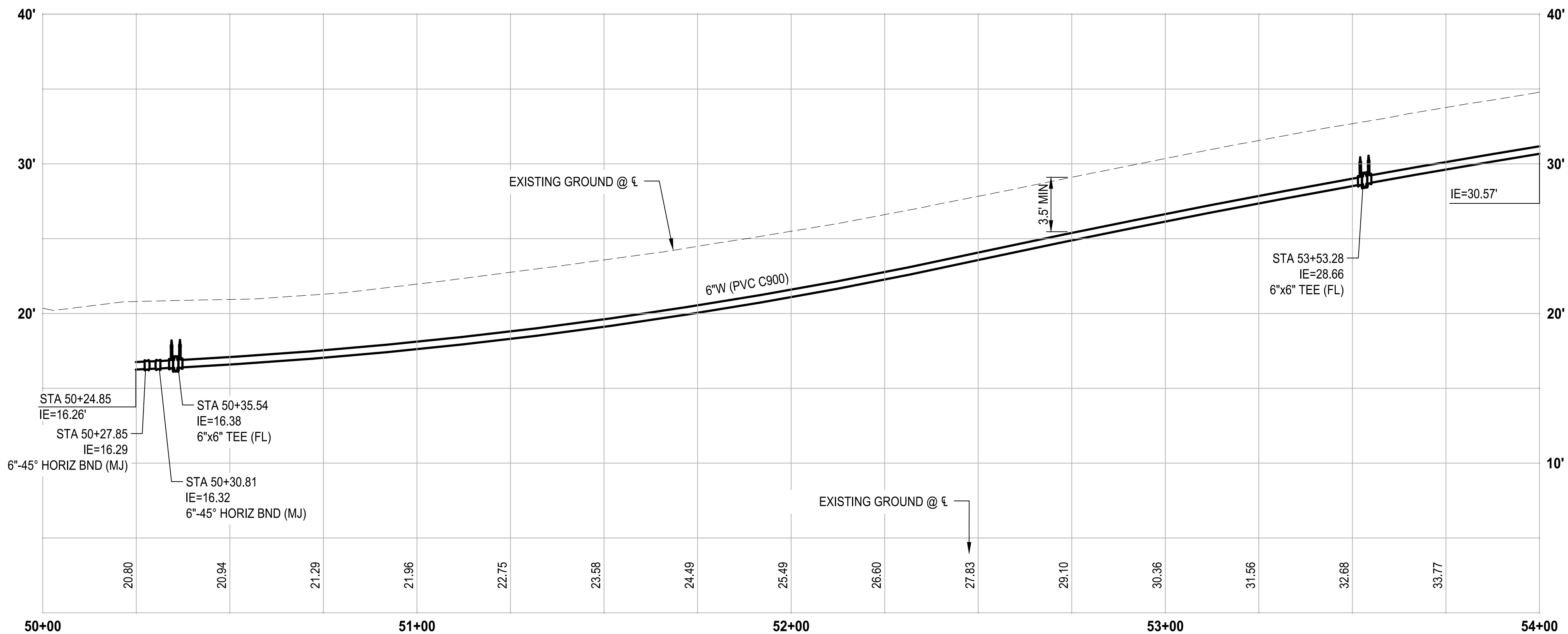
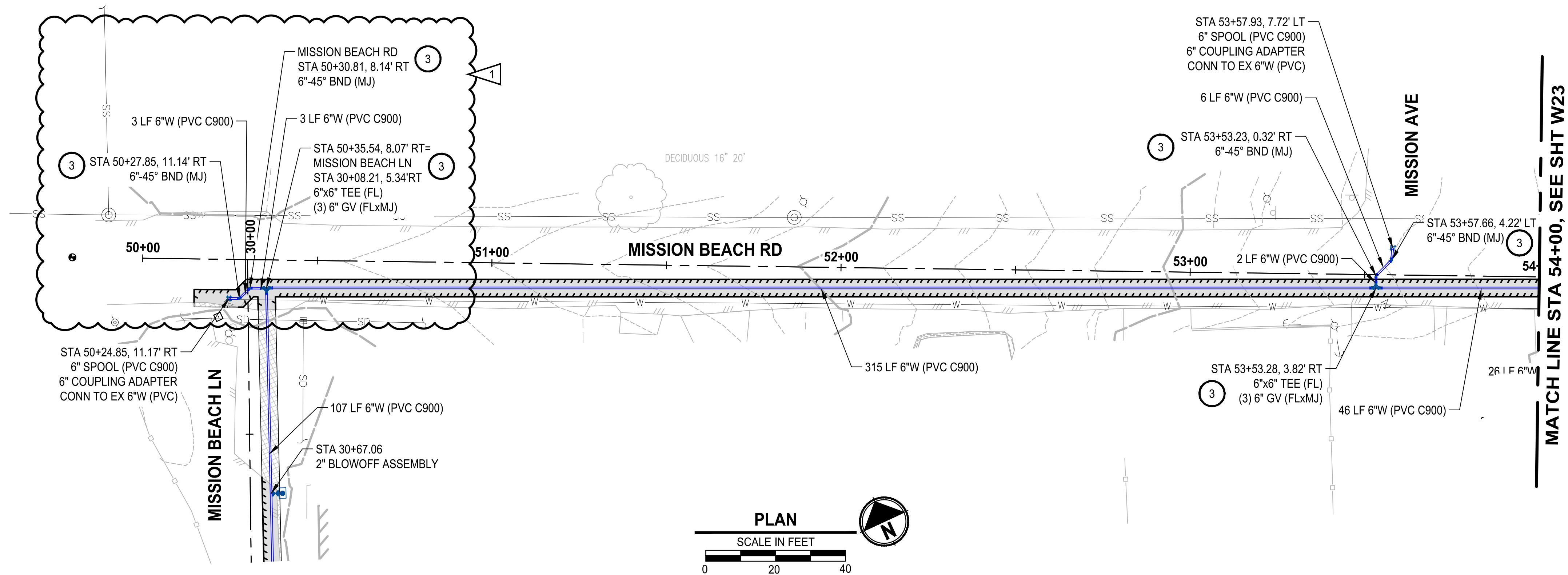
In accordance with Special Provisions Section 7-09.3(24)O, the Contractor will incur no charge for water used during the initial pressure and purity tests. However, if either test fails, the Contractor will be responsible for the cost of any additional water required to recharge the line. The Contractor is responsible for all power usage costs.

**Question:** Will the Tulalip Utilities assist the contractor in locating the existing water main or is the contractor to bear all responsibility per SP-70. In addition will the Tulalip Utilities be responsible for locating utilities other than water main?

**Answer:**

All costs to locate the existing water line shall be included in the respective bid item "Locate Existing Waterline." Tulalip Utilities will locate existing utilities other than the water main in accordance with their utility location policies.

PATH: U:\PSO\Projects\Clients\1598-TulipTribes\1598-1598-158 TulipBayWaterSystem\99Svcs\CADD\DWG\Water - Hermosa-Mission-88th-Waterworks  
LAYOUT: W22  
PLOTTED BY: mehmooy DATE: Wednesday, September 3, 2025 10:18:43 AM



#### PROFILE

HORIZ: 1"=20'  
VERT: 1"=5'

#### WATER GENERAL NOTES:

1. MAINTAIN A MINIMUM 3.5' AND MAXIMUM 5.0' COVER OVER WATER MAIN (TYP) OR AS SHOWN IN THE PROFILE.
2. THE EXISTING WATER MAIN IS SHOWN BASED ON THE TULALIP GIS, AND SHALL BE FIELD VERIFIED.

#### WATER KEY NOTES:

1. CONTRACTOR TO COORDINATE WITH SNOHOMISH COUNTY PUD IF NECESSARY FOR POLE HOLD.
2. INSTALL FIRE HYDRANT ASSEMBLY PER DETAIL 3, SHEET DT2.
3. THRUST BLOCKING PER DETAIL 8, SHEET DT3.
4. INSTALL 2-INCH COMBINATION AIR RELEASE / VACUUM VALVE ASSEMBLY PER DETAIL 10, SHEET DT3.
5. INSTALL 1" WATER METER AND PRV ASSEMBLY PER DETAIL 2, SHEET DT1 - NEAR SIDE.
6. INSTALL 1" WATER METER AND PRV ASSEMBLY PER DETAIL 2, SHEET DT1 - FAR SIDE.
7. CONTRACTOR SHALL EXPOSE EXISTING PIPE AT CONNECTION AND VERIFY DIMENSION AND FITTING NEEDS PRIOR TO ORDERING PARTS.
8. REMOVE EXISTING METER.
9. INSTALL 2" BLOWOFF ASSEMBLY PER DETAIL 5, SHEET DT2.
10. INLET PROTECTION

#### CONSTRUCTION NOTES:

1. WHEN A WATER MAIN IS TO BE INSTALLED WITH LESS THAN 10 FEET OF HORIZONTAL SEPARATION FROM A SEWER MAIN, AND A MINIMUM OF 18 INCHES OF VERTICAL SEPARATION IS MAINTAINED BETWEEN THE BOTTOM OF THE WATER MAIN AND THE CROWN OF THE SEWER, THE WATER MAIN AND ALL FITTINGS SHALL BE MECHANICALLY RESTRAINED USING ROMAC ROMAGRIP OR APPROVED EQUAL AS SHOWN ON SHEET DT3. ALL OTHER PIPE JOINTS NOT RECEIVING MECHANICAL RESTRAINT SHALL BE RESTRAINED WITH RESTRAINT GASKET AS SPECIFIED BY MANUFACTURER OR STAR PIPE EXTERIOR RESTRAINT HARNESS. IF THE REQUIRED 18-INCH VERTICAL SEPARATION CANNOT BE MAINTAINED AT A WATER MAIN CROSSING OVER A SEWER, THE WATER MAIN SHALL BE INSTALLED IN A STEEL CASING. A DESIGN REVISION REQUEST SHALL BE SUBMITTED TO THE ENGINEER A MINIMUM OF ONE WEEK PRIOR TO INSTALLATION OF THE AFFECTED PIPE SEGMENT.
2. SEE TYPICAL TRENCH SECTIONS DETAIL ON SHEET DT1 FOR PAVEMENT RESTORATION.
3. PRESERVE AND PROTECT EXISTING ASPHALT.
4. NEW METER AND FIRE HYDRANT LOCATIONS ARE APPROXIMATE AND THE CONTRACTOR SHALL COORDINATE WITH THE TRIBES AND FIELD VERIFY THE NEW LOCATIONS.
5. ALL EXISTING METERS FOUND IN THE FIELD, THAT HAVE NOT BEEN LABELED OR IDENTIFIED IN THE BASEMAP, AND WHERE TO REPLACE WITH A NEW METER, WILL BE REMOVED PER WATER KEY NOTES 8.

#### TESC / RESTORATION LEGEND

- SEEDING, FERTILIZATION, AND MULCHING
- ASPHALT RESTORATION
- CONCRETE RESTORATION
- GRAVEL RESTORATION
- CAP AND ABANDON EXISTING WATER MAIN
- SAWCUT
- STORM DRAIN INLET PROTECTION PER WSDOT STD PLAN I-40.20-00

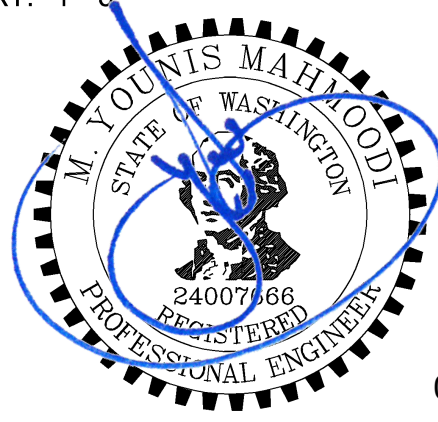


Know what's below.  
Call before you dig.

BID SET

REVISIONS	DATE	BY	DESIGNED
1	ADDENDUM 1	9-3-25	YM
			Y. MAHMOODI
			Y. MAHMOODI
			J. WRIGHT
			H. LONGFELLOW

ONE INCH AT FULL SCALE. IF NOT, SCALE ACCORDINGLY
FILE NAME PS1598158-W22-25
JOB No 216-1598-158
DATE AUGUST 2025



09-03-2025

**Parametrix**

1019 39th Avenue SE, Suite 100 • Puyallup, WA 98374  
Ph: 253.604.6600

PROJECT NAME
THE TULALIP TRIBES 2023 WATER SYSTEM IMPROVEMENTS TULALIP WASHINGTON

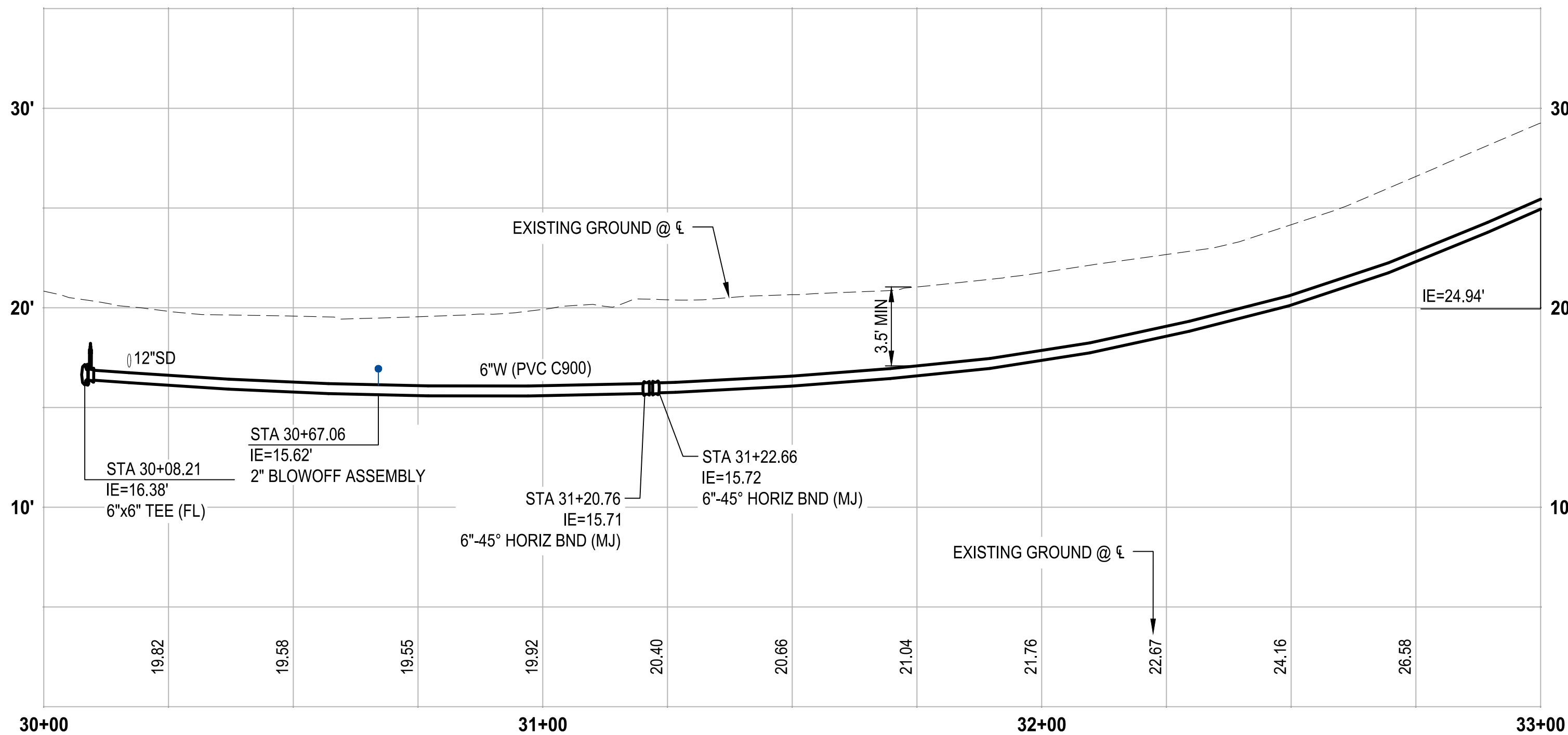
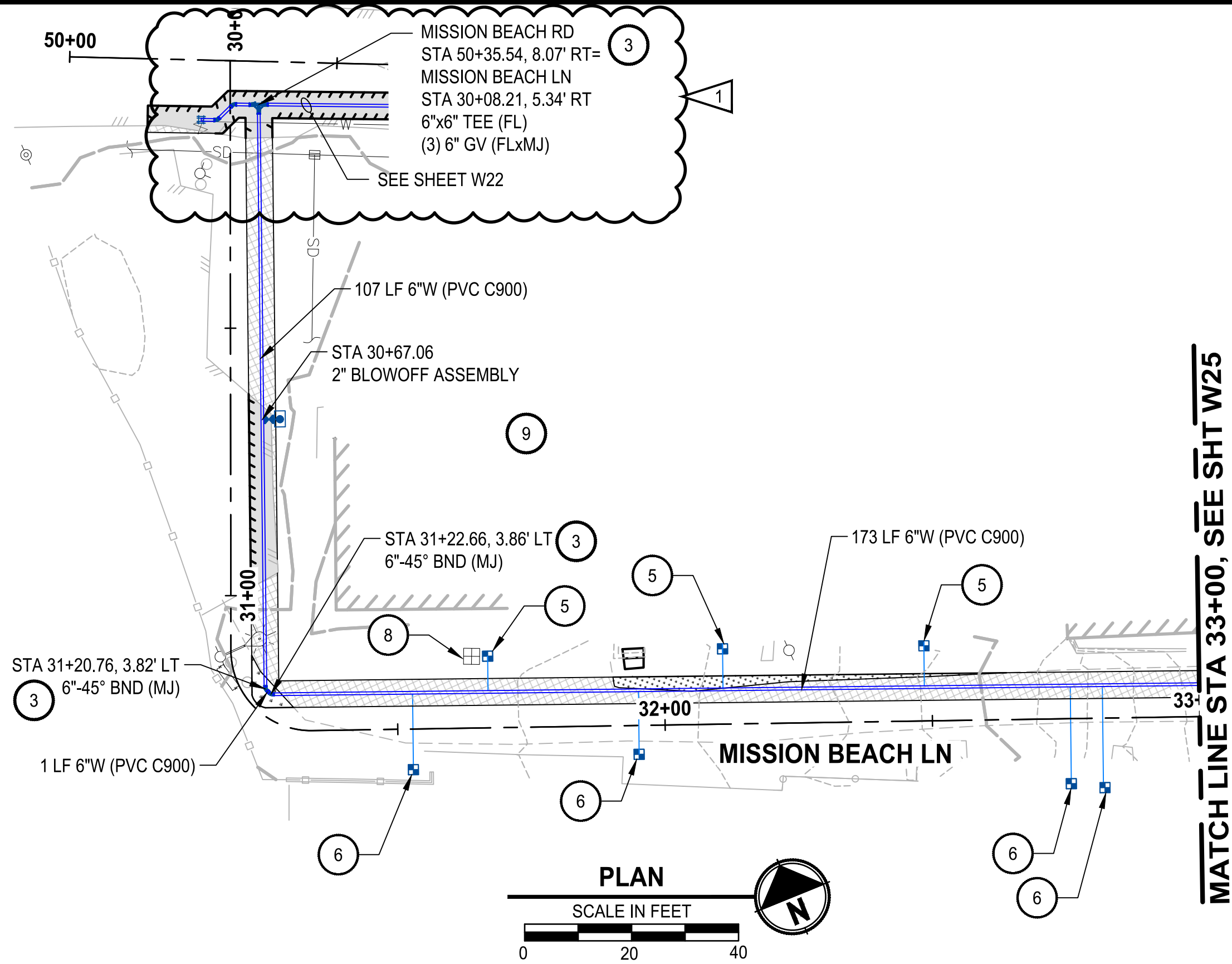
**WATER PLAN & PROFILE**  
**MISSION BEACH ROAD**  
**BEGIN - STA 54+00**

DRAWING NO.  
40 OF 50

**W22**

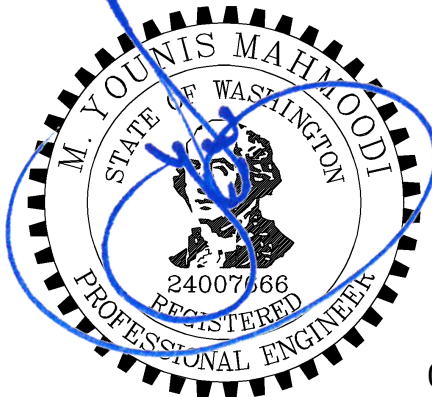


PATH: U:\PSO\Projects\Clients\1598-TulalipTribe\216-1598-158 TulalipBayWaterSystem\99Svcs\CADD\DWG\Water - Hermosa-Mission-88th-Waterworks  
LAYOUT: W24  
PLOTTED BY: mahmoudy DATE: Wednesday, September 3, 2025 10:24:03 AM



PROFILE

HORIZ: 1"=20'  
VERT: 1"=5'



ONE INCH AT FULL SCALE.  
IF NOT, SCALE ACCORDINGLY

FILE NAME	PS1598158-W22-25
JOB No	216-1598-158
DATE	AUGUST 2025

09-03-2025

Parametrix

1019 39th Avenue SE, Suite 100 • Puyallup, WA 98374  
Ph: 253.604.6600

PROJECT NAME

THE TULALIP TRIBES  
2023 WATER SYSTEM IMPROVEMENTS  
TULALIP WASHINGTON

WATER PLAN & PROFILE  
MISSION BEACH LANE  
BEGIN - STA 33+00

DRAWING NO.  
42 OF 50

W24

WATER GENERAL NOTES:

1. MAINTAIN A MINIMUM 3.5' AND MAXIMUM 5.0' COVER OVER WATER MAIN (TYP) OR AS SHOWN IN THE PROFILE.
2. THE EXISTING WATER MAIN IS SHOWN BASED ON THE TULALIP GIS, AND SHALL BE FIELD VERIFIED.

WATER KEY NOTES:

1. CONTRACTOR TO COORDINATE WITH SNOHOMISH COUNTY PUD IF NECESSARY FOR POLE HOLD.
2. INSTALL FIRE HYDRANT ASSEMBLY PER DETAIL 3, SHEET DT2.
3. THRUST BLOCKING PER DETAIL 8, SHEET DT3.
4. INSTALL 2-INCH COMBINATION AIR RELEASE / VACUUM VALVE ASSEMBLY PER DETAIL 10, SHEET DT3.
5. INSTALL 1" WATER METER AND PRV ASSEMBLY PER DETAIL 2, SHEET DT1 - NEAR SIDE.
6. INSTALL 1" WATER METER AND PRV ASSEMBLY PER DETAIL 2, SHEET DT1 - FAR SIDE.
7. CONTRACTOR SHALL EXPOSE EXISTING PIPE AT CONNECTION AND VERIFY DIMENSION AND FITTING NEEDS PRIOR TO ORDERING PARTS.
8. REMOVE EXISTING METER.
9. INSTALL 2" BLOWOFF ASSEMBLY PER DETAIL 5, SHEET DT2.
10. INLET PROTECTION

CONSTRUCTION NOTES:

1. WHEN A WATER MAIN IS TO BE INSTALLED WITH LESS THAN 10 FEET OF HORIZONTAL SEPARATION FROM A SEWER MAIN, AND A MINIMUM OF 18 INCHES OF VERTICAL SEPARATION IS MAINTAINED BETWEEN THE BOTTOM OF THE WATER MAIN AND THE CROWN OF THE SEWER, THE WATER MAIN AND ALL FITTINGS SHALL BE MECHANICALLY RESTRAINED USING ROMAC ROMAGRIP OR APPROVED EQUAL AS SHOWN ON SHEET DT3. ALL OTHER PIPE JOINTS NOT RECEIVING MECHANICAL RESTRAINT SHALL BE RESTRAINED WITH RESTRAINT GASKET AS SPECIFIED BY MANUFACTURER OR STAR PIPE EXTERIOR RESTRAINT HARNESS. IF THE REQUIRED 18-INCH VERTICAL SEPARATION CANNOT BE MAINTAINED AT A WATER MAIN CROSSING OVER A SEWER, THE WATER MAIN SHALL BE INSTALLED IN A STEEL CASING. A DESIGN REVISION REQUEST SHALL BE SUBMITTED TO THE ENGINEER A MINIMUM OF ONE WEEK PRIOR TO INSTALLATION OF THE AFFECTED PIPE SEGMENT.
2. SEE TYPICAL TRENCH SECTIONS DETAIL ON SHEET DT1 FOR PAVEMENT RESTORATION.
3. PRESERVE AND PROTECT EXISTING ASPHALT.
4. NEW METER AND FIRE HYDRANT LOCATIONS ARE APPROXIMATE AND THE CONTRACTOR SHALL COORDINATE WITH THE TRIBES AND FIELD VERIFY THE NEW LOCATIONS.
5. ALL EXISTING METERS FOUND IN THE FIELD, THAT HAVE NOT BEEN LABELED OR IDENTIFIED IN THE BASEMAP, AND WHERE TO REPLACE WITH A NEW METER, WILL BE REMOVED PER WATER KEY NOTES 8.

TESC / RESTORATION LEGEND

- |  |  |
|--|--|
|  | SEEDING, FERTILIZATION, AND MULCHING                       |
|  | ASPHALT RESTORATION  |
|  | CONCRETE RESTORATION                                       |
|  | GRAVEL RESTORATION   |
|  | CAP AND ABANDON EXISTING WATER MAIN                        |
|  | SAWCUT   |
|  | STORM DRAIN INLET PROTECTION PER WSDOT STD PLAN 1-40.20-00 |



Know what's below.  
Call before you dig.

BID SET